

**EVA-LAST<sup>®</sup>**

**PROJECTS**

# COMPANY PROFILE

[www.eva-last.co.za](http://www.eva-last.co.za) | 010 953 9220

# OUR COMPANY

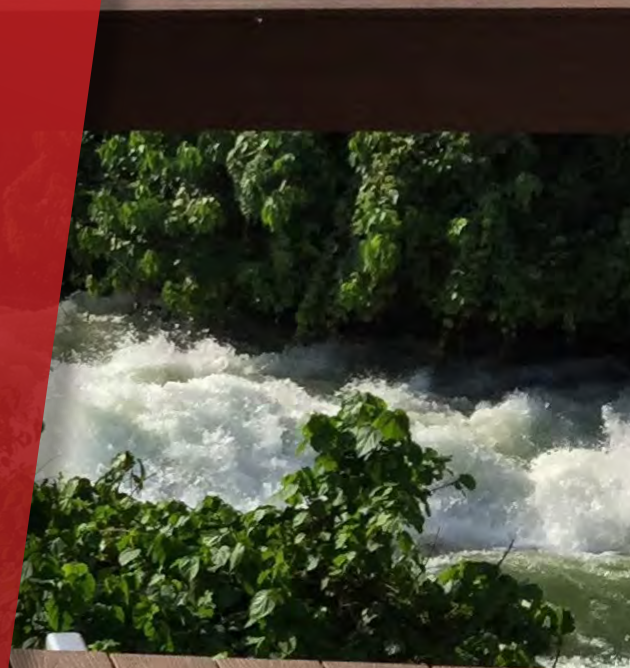
---

As leaders in composite building solutions, Eva-Last intends to set the standard for best practice when it comes to the manufacture as well as installation of its products, and, out of this desire, Eva-Last Projects was born.

Eva-Last's range of sustainable, cutting-edge composite technologies are highly engineered to suit almost any application, in any environment. And thanks to a dedicated team of installation experts, Eva-Last Projects offers customers the same level of expertise in fitting its products as it does in developing and manufacturing them.

Not only is quality installation guaranteed, but Eva-Last Projects allows for direct access to technical expertise, guidance, and professional drawing services to plot the project scope. This allows Eva-Last Projects to deliver accurate costings and product calculations and ensure projects are executed seamlessly.

With close to 100 years of combined experience in installation, Eva-Last Projects enjoys industry-leading proficiency having worked internationally in some of the harshest environments and in some of the most remote locations in the world. Customers can rest assured that Eva-Last Projects' expertise and skill are unmatched, globally.





# SERVICE OFFERING

---

Eva-Last Projects offers a comprehensive list of services to aid with any facet of a commercial building project be it consultation, full project management, or simply drawings and product specification.

# OUR SERVICES

## CONSULTATION

Eva-Last Projects conducts site visits and employs expert technical knowledge to advise on the planning and execution of any commercial building project.



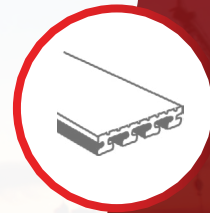
## DESIGN

The dedicated Eva-Last drawings office is on hand to create custom designs in line with any brief and can present floor plans as well as 2D and 3D technical drawings and renders.



## SPECIFICATIONS

Eva-Last Projects offers direct access to all Eva-Last products and product advice that is based on in-depth product, material, and installation knowledge. Ensuring only the best quality, most suitable products are specified.



## PROJECT MANAGEMENT

Eva-Last Projects' expert Project Managers are equipped to manage commercial projects of all sizes and establish communication that is transparent before, during, and after project completion. We devote our full attention to providing thorough project planning and insightful management.

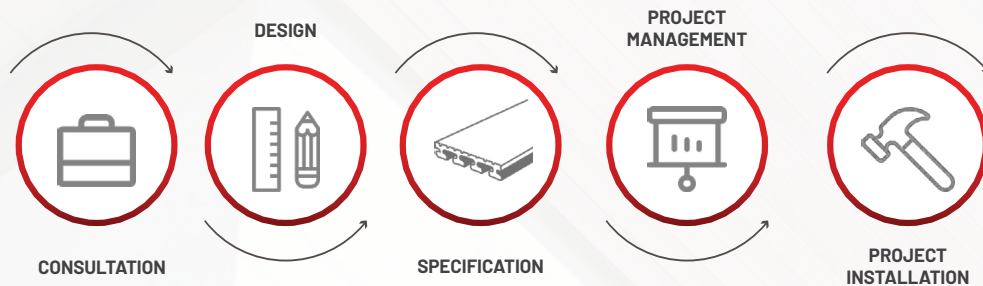


## PRODUCT INSTALLATION

Eva-Last Projects' team of experienced composite experts delivers reliable and highly accurate installation to ensure the lifespan of any project undertaken.



# TURNKEY OFFERING



Coupled with our individual service offering, Eva-Last Projects is committed to offering a superior turnkey solution from consultation and design to final execution and is committed to delivering and guaranteeing the highest quality workmanship and service throughout the process.

Eva-Last Projects provides a thorough and systematic approach to any project undertaken and prides itself on the skill, level of communication, and service dedicated to each phase of any project undertaken.

## TURNKEY APPROACH

### CONSULTATION

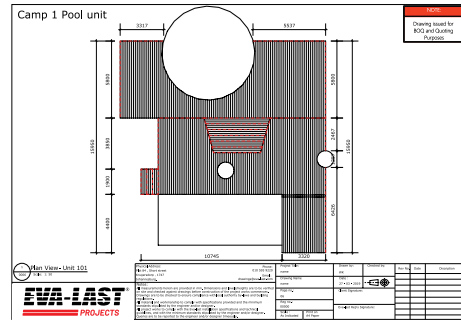
In the initial stage of any commercial project scoping, the Eva-Last Projects team will review the brief and conduct a thorough site inspection. This will allow the team to fully understand the nuances of the project, fully scope the project, and highlight all key considerations from the outset of the project.

### DRAWINGS

Following the initial site inspection, the Eva-Last Projects drawing team will develop floor plans as well as technical drawings, including 2D and 3D CAD mock-ups, for review and approval.

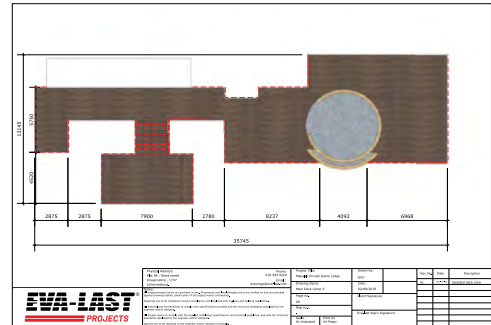
## FLOOR PLANS

The Eva-Last Projects team begins by generating detailed floor plans in line with the project brief and site inspection insights. A dedicated Project Manager will discuss these plans, incorporate feedback, and have adjustments to floor plans made where necessary.



## 2D TECHNICAL DRAWINGS

Once floor plans have been approved, the Eva-Last Projects drawing team will generate 2D technical drawings to ensure the details and nuances of the vision are included in the project design. The dedicated Eva-Last Projects Project Manager will discuss these drawings with the client and ensure final approval.



## 3D MOCKUPS

Once the 2D technical drawings are approved, 3D mock-ups of the project will be generated and submitted for client approval. These detailed mock-ups give further insight into how the final project will look and function and offer the opportunity to make any final adjustments to the project design before the project commences.



## SPECIFICATION

Eva-Last Projects enables access to the full range of high quality, sustainable building materials offered by Eva-Last. The Eva-Last Projects team will aid with advice and accurate specification of the Eva-Last product offering best suited for the project. Based off approved plans, Eva-Last Projects is able to fully quantify material requirements, supply a bill of materials, and, from here, provide cost estimates and supply lead times.

## PROJECT MANAGEMENT

Throughout the entirety of the project, the Project Manager is dedicated to maintaining a clear line of communication and a productive working relationship with the project and construction teams, to ensuring the project is seamlessly run. The Project Manager remains on hand to handle any on-site adjustments that may arise during installation.

## PROJECT INSTALLATION

Under the supervision of the assigned Eva-Last Project Manger, the Eva-Last Projects team remains focused on the installation and completion of the project build. The Eva-Last Projects installation teams are highly skilled composite experts who remain dedicated to implementing to the most exacting specifications.



# CHOOSE SUSTAINABLE BUILDING PRODUCTS

Eva-Last Projects enables seamless access and expert knowledge on the full Eva-Last product offering.

Eva-Last is a globally reputable brand that utilises a solution driven business model to create innovative, sustainable building materials and systems that add value to customers' lives. By embracing low environmental impact manufacturing and cutting-edge composite technology, Eva-Last is revolutionising how building can be done. We design and deliver beautiful, long-lasting green alternatives that make our customers' lives easier, healthier, and just plain better.

[VIEW THE FULL EVA-LAST PRODUCT CATALOGUE HERE](#)

## COMPOSITE DECKING

Eva-Last composite decking is designed to make any outdoor area more beautiful and more enjoyable. Choose from our specialised bamboo composite decking brands.



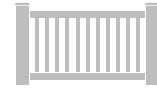
## CLADDING

VistaClad lightweight, ventilated bamboo composite cladding is a complete system designed to be cost-effective, low-maintenance, weather resistant, and easier to install by utilising reliable clip strip technology which clips and locks boards into place.



## RAILING

RapidRail combines safety and artistry for a composite railing system that makes your space more functional, more secure, and more appealing.



## ARCHITECTURAL BEAMS

Lifespan architectural beams offer design versatility, easier installation at height, decay, fade, and weather resistance, and increased span thanks to their specialised lightweight aluminium core coated in low-maintenance bamboo composite.



## INDOOR FLOORING

TIER luxury flooring provides the beauty of wood in a Stone Polymer Composite (SPC) that is heat and water resistant, highly stable, VOC free, and antimicrobial, and offers sound suppression with an easy click installation system.



## FASTENERS

HULK Fasteners are purposefully designed to make composite or timber decking installations more efficient, straightforward, and beautiful with their long-term durability, reliable grip, and range of colours to complement the look of your decking of choice.







# INSTALLATION HIGHLIGHTS

ENGLISH POINT MARINA  
MAMOBASA, KENYA

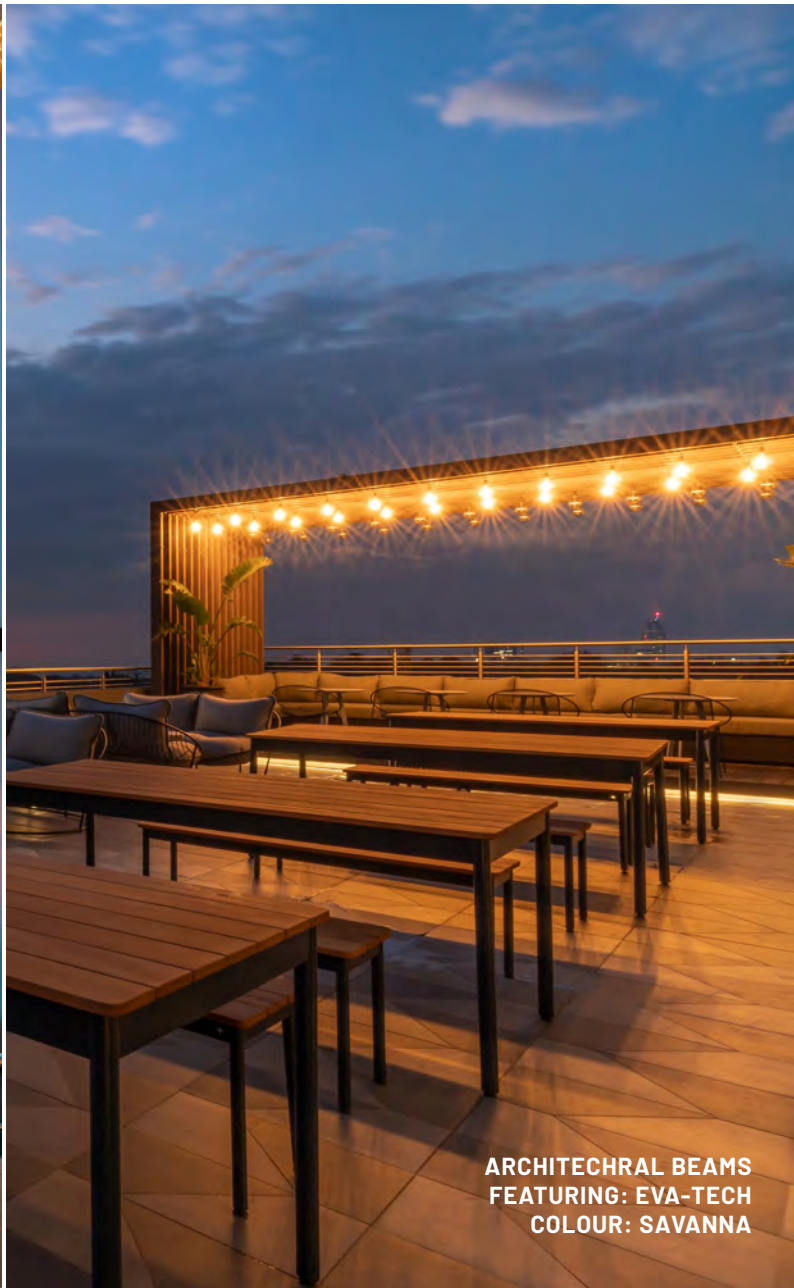


**COMPOSITE DECKING & CLADDING  
FEATURING: EVA-TECH  
COLOUR: ARUNA**



**COMMERCIAL**

**RADISSON RED HOTEL**  
SANTON, SOUTH AFRICA



PHOTOGRAPHY CREDIT: PATRICK KING PHOTOGRAPHY  
COPYRIGHT © RADISSON RED HOTEL - ALL RIGHTS RESERVED.

ARCHITECTURAL BEAMS  
FEATURING: EVA-TECH  
COLOUR: SAVANNA



  
**KRUGERDORP GOLF COURSE**  
ROODEPOORT, SOUTH AFRICA



COMPOSITE DECKING  
FEATURING: INFINITY  
COLOUR: TIGER COVE



STAIRS  
FEATURING: INFINITY  
COLOUR: TIGER COVE



RAILING WITH DRINK RAIL  
FEATURING: INFINITY  
COLOUR: TIGER COVE



---

**CHARTWELL CORNER**  
DAINFERN, SOUTH AFRICA



DECORATIVE BEAMS  
FEATURING: EVA-TECH  
COLOUR: SAVANNA



FASCIA BOARDS & CLADDING  
FEATURING: EVA-TECH  
COLOUR: SAVANNA





LEROY MERLIN

HARDWARE BATHROOM HOME DECOR GARDEN

www.leroymerlin.co.za

LEROY MERLIN  
FOURWAYS, SOUTH AFRICA



CLADDING  
FEATURING: APEX  
COLOUR: BRAZILLIAN TEAK



ARCHITECTURAL BEAMS  
FEATURING: EVA-TECH  
COLOUR: SAVANNA



**STEYN CITY HIGH SCHOOL**  
FOURWAYS, SOUTH AFRICA



**SCREENING  
FEATURING: EVA-TECH  
COLOUR: ARUNA**



**ARCHITECTURAL BEAMS  
FEATURING: EVA-TECH  
COLOUR: ARUNA**



**SCREENING  
FEATURING: EVA-TECH  
COLOUR: ARUNA**



---

**STEYN CITY WATER PARK**  
FOURWAYS, SOUTH AFRICA



CLADDING  
FEATURING: INFINITY  
COLOUR: CAPE TOWN GREY



ARCHITECTURAL BEAMS  
FEATURING: EVA-TECH  
COLOUR: RUSTEAK



COMPOSITE DECKING  
FEATURING: INFINITY  
COLOUR: TIGER COVE



# HOSPITALITY

MAKALALI PRIVATE LODGE  
HOEDSPRUIT, SOUTH AFRICA



COMPOSITE DECKING & RAILING  
FEATURING: INFINITY  
COLOUR: TIGER COVE





**BALULE PLAINS LODGE**  
HOEDSPRUIT, SOUTH AFRICA



COMPOSITE DECKING  
FEATURING: EVA-TECH  
COLOUR: XAVIA



---

**WILD WATERS LODGE**  
KANGULUMIRA, UGANDA



**SCREENING  
FEATURING: INFINITY  
COLOUR: TIGER COVE**

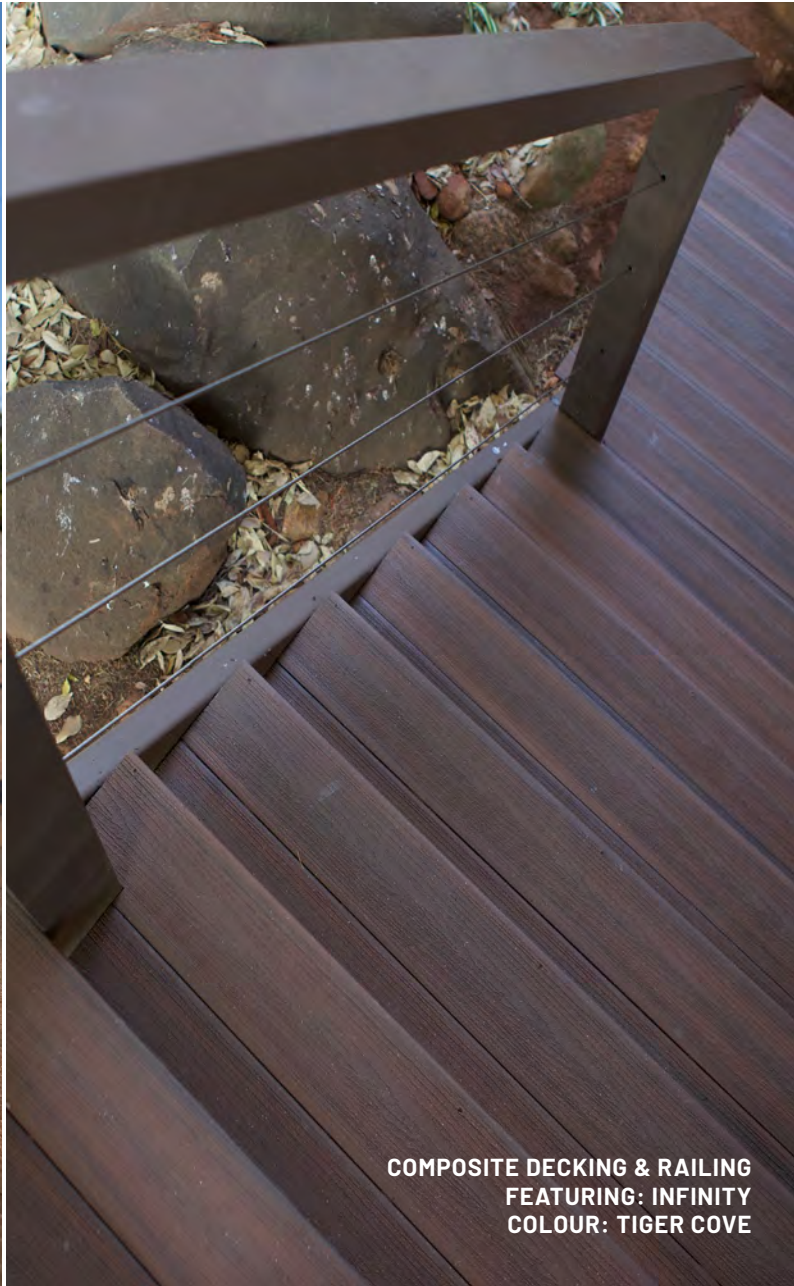


**COMPOSITE DECKING & RAILING  
FEATURING: INFINITY  
COLOUR: TIGER COVE**



---

**GREENFIRE LODGE**  
NORTHCLIFF, SOUTH AFRICA



COMPOSITE DECKING & RAILING  
FEATURING: INFINITY  
COLOUR: TIGER COVE



**BROOKLYN HOUSE**  
PRETORIA, SOUTH AFRICA



COMPOSITE DECKING & CLADDING  
FEATURING: EVA-TECH  
COLOUR: SAVANNA



SEATING  
FEATURING: EVA-TECH  
COLOUR: SAVANNA



## CONTACT

Head office:  
84 Short Street,  
Muldersdrift, Johannesburg,  
South Africa

Phone: 010 953 9220  
Email: [projects@eva-last.com](mailto:projects@eva-last.com)  
[www.eva-last.co.za](http://www.eva-last.co.za)